

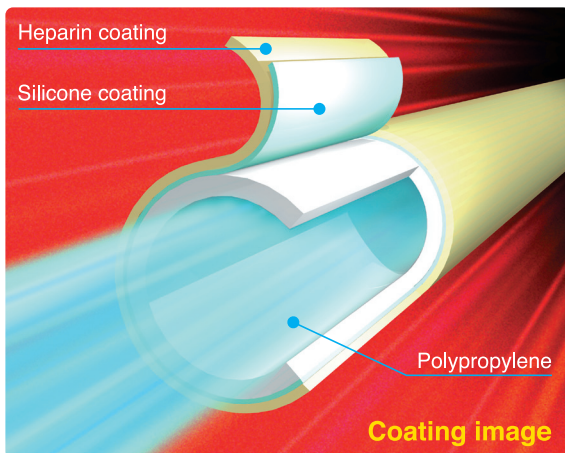


MERA Exceline Circuit HP2 **PCPS circuit SOLAS**

Silicone Oxygenator Long Assist System

- Blood circuit designed for ECMO (PCPS) use
- Utilizes durable MERA NHP Excelung NSH-R Oxygenator and MERA Centrifugal Blood Pump
- Blood-contacting areas treated with Heparin coating

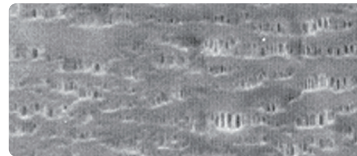
Enhanced durability — MERA Silicon Coating —



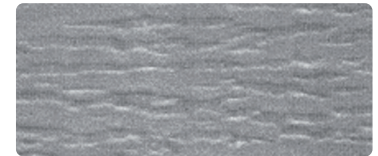
Silicone-coated porous polypropylene hollow fiber membrane is used for the oxygenating section

- A silicone layer only 0.2μm thick reduces plasma leaks while maintaining high oxygenation capability.
- Hollow fiber surfaces are smoothed to minimize impact on blood cell components.
- Coated with Heparin.

Electron micrograph of hollow fiber membrane surface

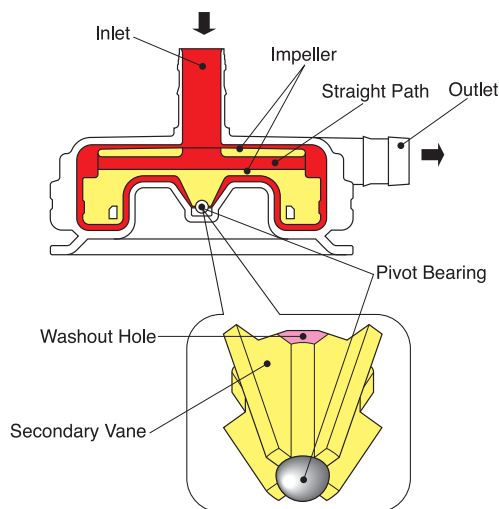


● Polypropylene surface



● Silicone-coated polypropylene surface

Compact size and High durability — MERA Centrifugal Blood Pump HCF-MP23H —



- Impeller shaft features a single pivot bearing for high durability.
- A hole in the impeller base (washout hole) as well as secondary vanes suppress blood clot formation on the back of the impeller.
- Coated with Heparin.



SPECIFICATIONS

Priming Volume	563mL
Outlet ID	3/8inch
Inlet ID	3/8inch
Outlet connector	Lock Connector
Inlet connector	Lock Connector
Model of Oxygenator	HPO-23WH-C
Membrane material	Silicone-coated porous polypropylene hollow fiber membrane
Valid membrane surface area	2.3m ²
Maximum flow rate	7L/min
Heat Exchanger	Multitubular polyethylene terephthalate (surface area:0.23m ²)
Cold/Warm water inlet/outlet ports	12.7mm (1/2inch)
Model of Centrifugal Blood Pump	HCF-MP23H
Maximum pump speed	5000rpm

MERA SENKO MEDICAL INSTRUMENT Mfg. Co., Ltd.

2-11-1, Hamakawado, Kasukabe-shi, Saitama 344-0054 Japan.

Contact : Phone. 813-3836-9031 Fax. 813-3836-9087 <http://www.mera.co.jp/>